



# 2 Komponenten Maschinenbau

---

## Mixing and Metering Systems



PolyMix®



## PolyMix 1300/1350



PolyMix 1300

The PolyMix 1300 units with pneumatic and the PolyMix 1350 units with hydraulic actuation are robust machines for 20 and 200 litre barrels.

The precise metering via parallelly working pumps have got a mixing ratio defined by means of the piston rod diameter, respectively in case of the PolyMix 1350 unit variably by means of lever bars.

The drums of material can be introduced from the right or left. The weight check of the metering may be effected by means of a one-hand controlled adapter.

The units offer the following advantages:

- ✓ a design ensuring easy service and easy accessibility of all assemblies.
- ✓ New large-volume pump systems and removal aids, thus minimizing the time required for maintenance
- ✓ Improved, more durable sealing systems in the pumps
- ✓ Externally located valves for reliable operation
- ✓ Hard-alloy metal balls for abrasive manganese hardener
- ✓ Hard-alloy needles in the injection gun
- ✓ Trumpet-style mixers which may be disassembled
- ✓ Protection against running dry and against excess pressure
- ✓ Reproducible metering settings
- ✓ Mesamol reservoir for polyurethane adhesive
- ✓ Special drum support for optimum use of residual quantities
- ✓ Options for individual adaptation to customers' specific circumstances
- ✓ Barrel Emptying Control
- ✓ CE Conformity

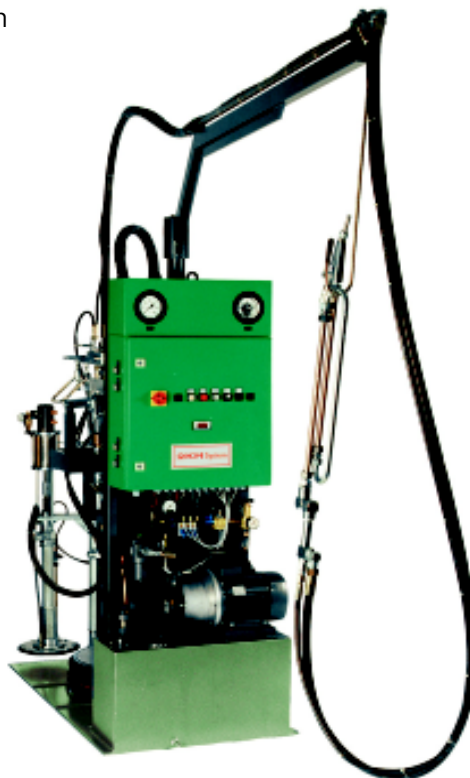
Options:

- ✓ Potlife Control
- ✓ 2-hands safety control
- ✓ Swivel arm 2 m (may be extended to 4 m upon request)
- ✓ Balancer to compensate the weight of the hand-held gun
- ✓ Cartridge filling station
- ✓ Heatable follower plates for the A component
- ✓ Swivel arm heating
- ✓ B component as 200 litre version
- ✓ A component as 20 litre version
- ✓ Automatic mixer head
- ✓ Flushing device
- ✓ Flushing time control

## 2 KM Product Line PolyMix

The 2KM product line PolyMix was especially developed for the processing of pasty 2 component adhesives such as Polysulfide (Thiokol), Polyurethane and Silicone. A range of efficient and reliable machines offer an optimal solution for each case of application.

From the simple manual processing, type PolyMix 1300 and PolyMix 1350 up to the wholly-electronically controlled PolyMix 1750, The service-friendly design of all the assemblies is only one of a multitude of advantages.

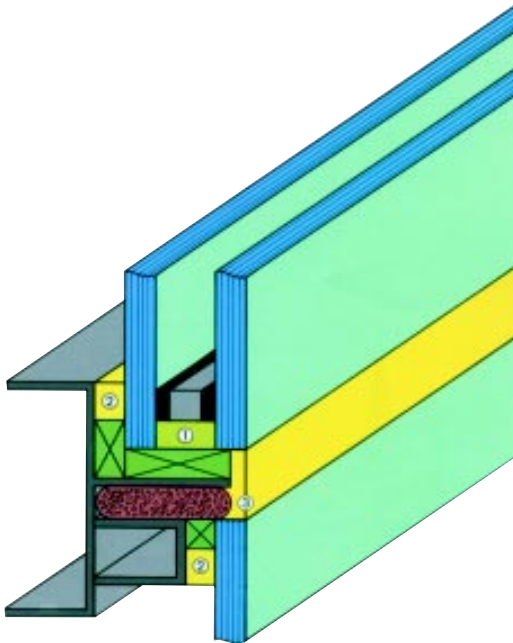


PolyMix 1350

## Insulation Glass Unit

The design shows Structural Glazing of insulation glass units which are stuck onto PolyMix machines by means of glue and then sealed.

- ① Silicone insulation glass adhesion
- ① Structural Glazing silicone adhesion
- ③ Silicone adhesion



## PolyMix 1750

High-quality machine with hydraulic actuation and PLC control.

For quality assurance of the production, this machine may optionally be equipped with a permanent metering control with gearwheel metering counters and a protocol printer.

The working parameters are limited and controlled. Error messages are displayed in clear text and printed with the machine data.



## Dry Freezer System

A compact device for freezing and thawing of two-component systems.

The freezer unit was developed in order to cool 2 component systems from the ordinary processing temperature onto a cold-storage temperature, thus increasing the potlife time.

The installed electrical heating enables a heating of the 2 component systems onto the respective processing temperature and works only upon request.



Thus a lot of energy may be saved.



Dry Freezer



## Technical Data

Assembly PolyMix	1300	1350	1750	Dry-Freezer -25 C
Viscosity in mPa s A Component	max. 1 Mio	max. 1 Mio	max. 2 Mio	–
Mixing Ratio	10:1	7,5–10:1	7:1 to 20:1 *1)	–
Max. Scrap Rate (dep.on viscosity)	2kg/min	5kg/min	5kg/min	–
Actuation	pneumatic	hydraulic	hydraulic	–
Connection Pneumatic	R1/2" 7 bar	R1/4" 7 bar	R1/4" 7 bar	–
Air Consumption	approx. 80l./min	low	low	–
Voltage Connection	220V/500W/50Hz	400V/3kW/50Hz	400V/4kW/50Hz	220V/1,8kW/50Hz
Heating Capacity	4,8 kW	4,8 kW	4,8 kW	1200 W
Power Consumption Cooling	–	–	–	115W
Vat Diameter quoted in mm	570/280	570/280	570/280	–
Vat Height quoted in mm	800/400	800/400	800/400	–
Weight Quoted in kg	400	550	1000	80
Dimensions L x B x H in mm	800x1430x2500	800x1430x2500	1300x1200x2500	1100x420x1170

\*1) Depending on Pump Size

We reserve the right to carry out modifications.